

NOTES:
 1) STANDARD "STOCK" XPANDRELS ARE UNFINISHED, THE MILL STOCK IS 0.040 OVER THE MAX DIAMETER OF LISTED SIZE RANGE. THE XPANDREL IS READY FOR FINISH TURNING USING PROVIDED FINISH TURNING PROCEDURE.

2) IF YOU WANT US TO TURN IT TO YOUR PART SPECS JUST ASK AND WE CAN FINISH IT FOR YOU TO YOUR PART SPECS

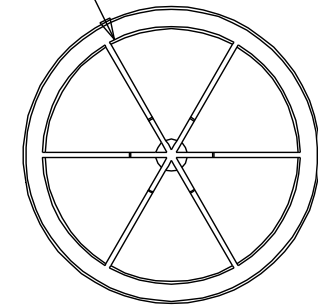
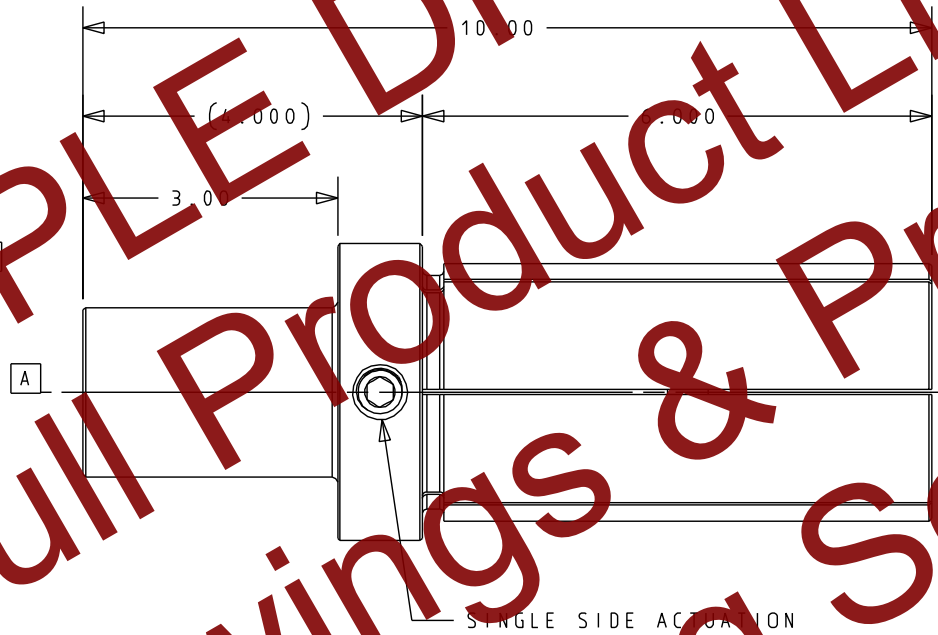
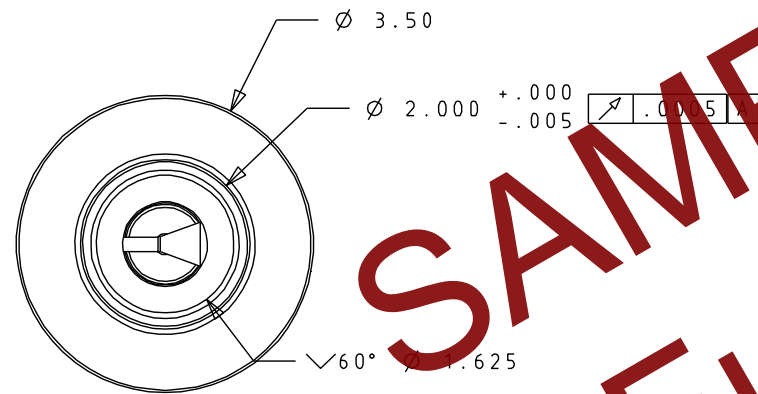
3) THIS XPANDREL HAS A WORKING LENGTH OF 6"

4) THIS XPANDREL CANNOT BE TURNED DOWN BELOW 2.00"


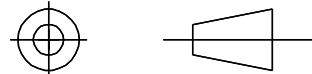
5) THIS XPANDREL IS MANUFACTURED TO PROVIDE THE ABILITY TO ACHIEVE A MINIMUM OF 0.001" TIR WHEN FINISHED

6) THIS XPANDREL HAS SINGLE ACTUATION VIA THE FLANGE WITH 1 EXPANDING AREA

MOUNTAIN MACHINERWORKS PROVIDES A MULTITUDE OF FINISHING, MODIFICATION & CUSTOMIZATION OPTIONS PLEASE CONTACT US IF YOU HAVE OTHER NEEDS OR QUESTIONS 800-660-6680



SAMPLE DRAWING
 Full Product Line
 Drawings & Pricing
 Coming Soon!

PROPRIETARY NOTICE EXCEPT AS OTHERWISE AGREED TO IN WRITING, THE DESIGN AND INFORMATION DISCLOSED HEREIN ARE THE PROPERTY OF MOUNTAIN MACHINE WORKS, INC. AND MUST NOT BE COPIED OR DISTRIBUTED OUTSIDE MOUNTAIN MACHINE WORKS EXCEPT TO AUTHORIZED PERSONS WITH A GENUINE NEED TO KNOW WHO BY THE USE HEREOF ACKNOWLEDGE MOUNTAIN MACHINE WORKS AS OWNER AND AGREE TO MAINTAIN THIS DESIGN AND INFORMATION IN STRICT CONFIDENCE.		MOUNTAIN MACHINE WORKS 2589 HOTEL ROAD, AUBURN, ME 04210 www.Xpandrel.com			
TOLERANCES (EXCEPT AS NOTED) DECIMAL .XXXX ± .0005 .XXX ± .005 .XX ± .01 .X ± .02 FRACTIONAL ± .015 ANGULAR ± 1°		MATERIAL 4140 HT BODY - INTERNALS VARY		SCALE 1:2 FINISH (EXCEPT AS NOTED) 63√MAX.	
THIRD ANGLE PROJECTION 		DATE 11/30/2012 DRAWN BY K.HASKELL		DATE APPROVED BY 	
TITLE 2000 SERIES C XPANDREL ASSY 6WL10 FS		SHEET 1 OF 1		DRAWING NUMBER 20F6WL10BFSHTS-97 - APPROVAL DRAWING	
				REV. 11	